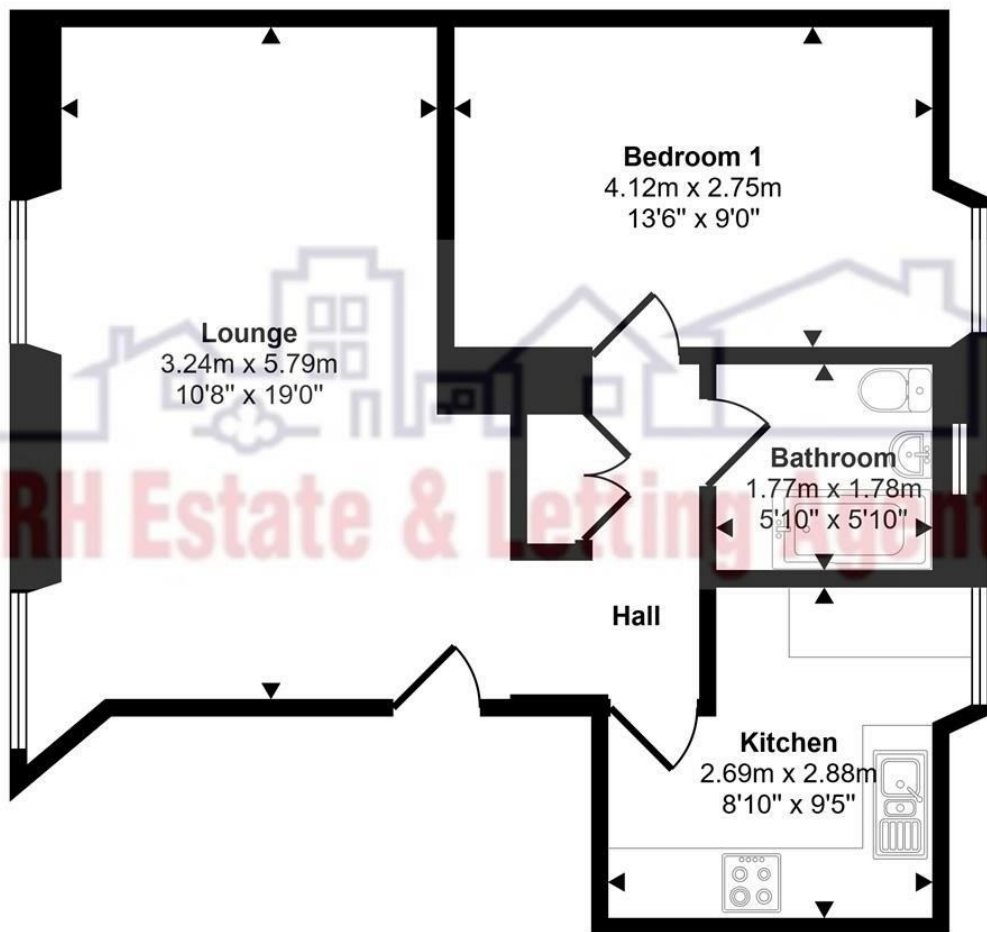


Approx Gross Internal Area  
51 sq m / 551 sq ft



Marazion

£675 PCM





Flat 2 West End Cottages  
Marazion  
TR17 0EL

£675

## KEY FEATURES

- First Floor Apartment
- Sea Views
- Garden
- Available as a long let
- One Bedroom
- EPC E 48 81)

## DIRECTIONS

As you leave Penzance on Chyandour Cliff, proceed east towards Long Rock. Continue along the coast road as it leads into Marazion. The road will become West End Road, where the apartment is situated on the left-hand side, just prior to The Tudor Chippy.



*Situated in the popular market town of Marazion is this one bedroom first floor flat which benefits from both garden and a sea view. The property is available and as a long let. The accommodation comprises of a lounge, kitchen, bathroom, bedroom and a garden.*

*SERVICES: Mains Electric, Water & drainage*

*HEATING: Electric Room Heaters*

*EPC: E (48 81)*

*Ofcom suggest ultrafast broadband is available and that mobile coverage is good on most networks.*

*Available as a long let \*\*£675 pcm  
Rent  
£675 Deposit  
Available immediately*

